



TrueForce LED Industrial and Retail Mains (Highbay – HPI/SON/HPL)

TForce LED HB MV ND 200-160W E40 840 NB

Philips TrueForce LED I&R mains lamps offer an easy and short payback LED solution to replace High Intensity Discharge (HID) lamps. The products bring the energy efficiency and long lifetime benefits of LED to HID replacement and provide instant saving and low initial investment. With the right lamp size and light distribution, you can easily retrofit TrueForce LED I&R mains lamps and bypass the existing ballast while enhancing the lighting quality.

Product data

General Information			
Cap-Base	E40 [E40]	Color Consistency	<6
Nominal Lifetime (Nom)	50000 h	Color Rendering Index (Nom)	80
Switching Cycle	50000X	LLMF At End Of Nominal Lifetime (Nom)	70 %
Technical Type	160-400W	Operating and Electrical	
Light Technical		Input Frequency	50 to 60 Hz
Color Code	840 [CCT of 4000K]	Power (Rated) (Nom)	160 W
Beam Angle (Nom)	60 °	Lamp Current (Nom)	900 mA
Luminous Flux (Nom)	20000 lm	Wattage Equivalent	400 W
Luminous Flux (Rated) (Nom)	20000 lm	Starting Time (Nom)	0.7 s
Color Designation	Cool White (CW)	Warm Up Time to 60% Light (Nom)	0.7 s
Correlated Color Temperature (Nom)	4000 K	Power Factor (Nom)	0.9
Luminous Efficacy (rated) (Nom)	125.00 lm/W	Voltage (Nom)	220-240 V

TrueForce LED Industrial and Retail Mains (Highbay – HPI/SON/HPL)

Temperature

T-Case Maximum (Nom) 100 °C

Controls and Dimming

Dimmable No

Mechanical and Housing

Bulb Finish Frosted

Approval and Application

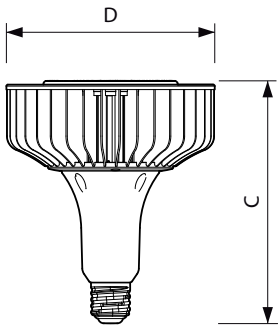
Energy Efficiency Label (EEL) A+

Energy Consumption kWh/1000 h 160 kWh

Product Data

Full product code	871869959670500
Order product name	TForce LED HB MV ND 200-160W E40 840 NB
EAN/UPC - Product	8718699596705
Order code	929001812402
Numerator - Quantity Per Pack	1
Numerator - Packs per outer box	2
Material Nr. (12NC)	929001812402
Net Weight (Piece)	1.300 kg

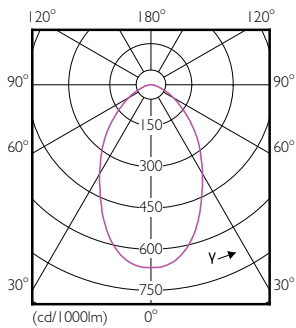
Dimensional drawing



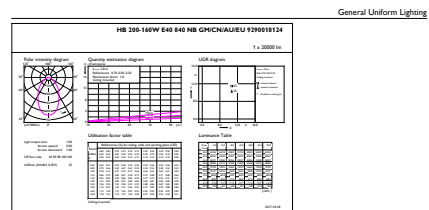
Bulb T50 180-400W 20000lm 4000K E40 ND

Product	D	C
TForce LED HB MV ND 200-160W E40 840 NB	211 mm	263 mm

Photometric data

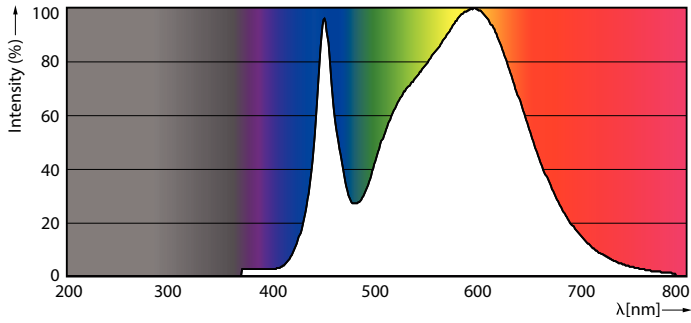


LED TForce HB MV 200-160W E40 T50 Frosted 840 6D ND NB



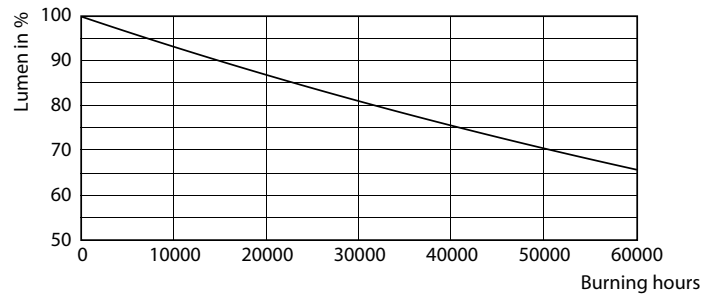
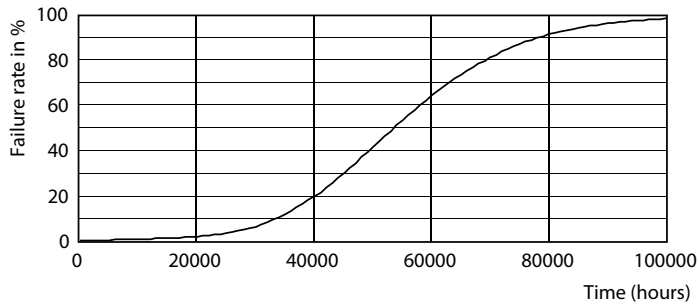
TrueForce LED Industrial and Retail Mains (Highbay – HPI/SON/HPL)

Photometric data



LED TForce HB MV 200-160W E40 T50 Frosted 840 6D ND NB

Lifetime



LedTrueForce

LED TForce HB MV 200-160W E40 T50 Frosted 840 6D ND NB

